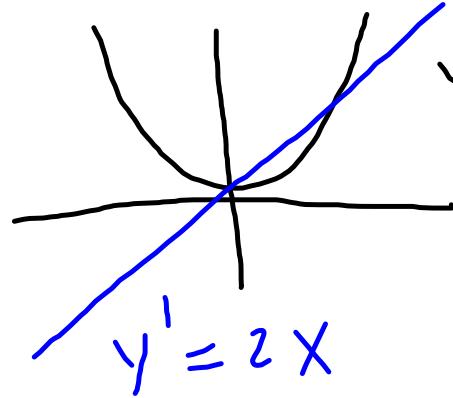


3.1 derivatives - slope of a
tangent line
(number)

also

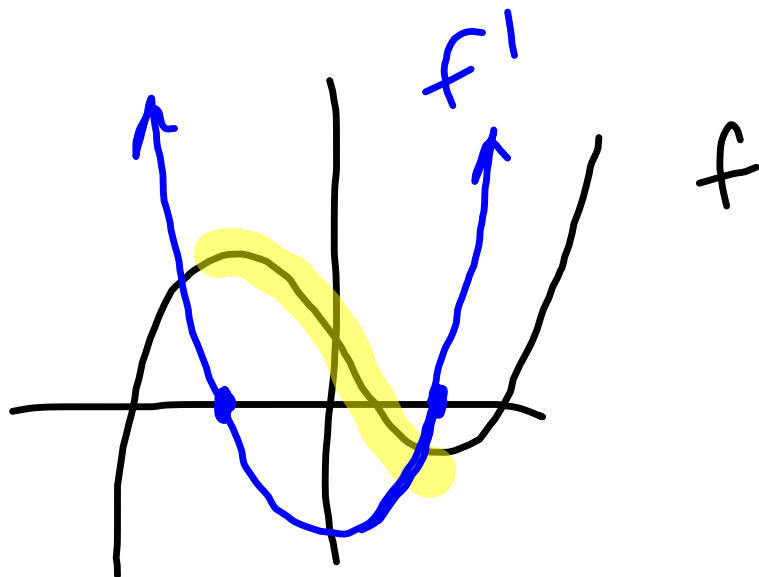
y' = derivative - function (equation)



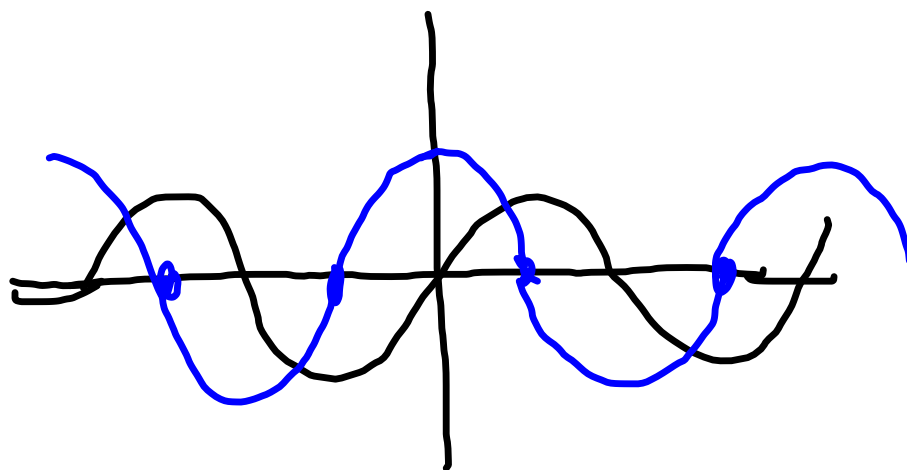
$$y = x^2$$

slope function

plug in a number
for x to get
the slope of that
tangent line

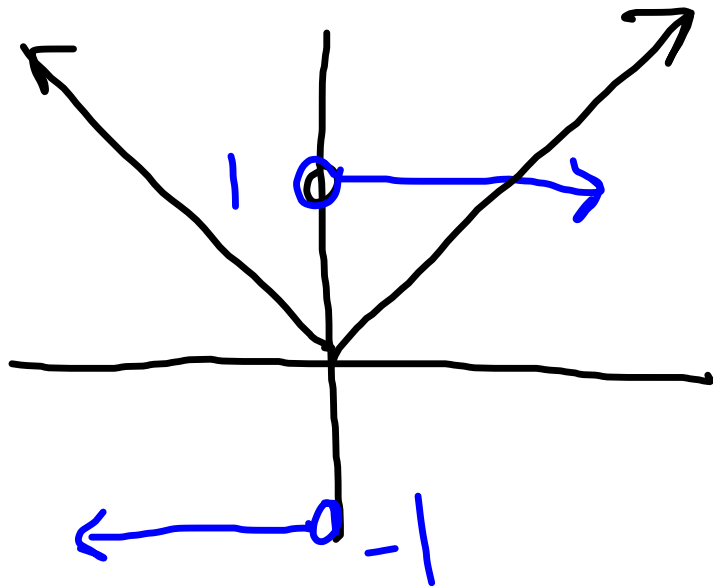


sketch f'
(predict, guess)



sketch f'

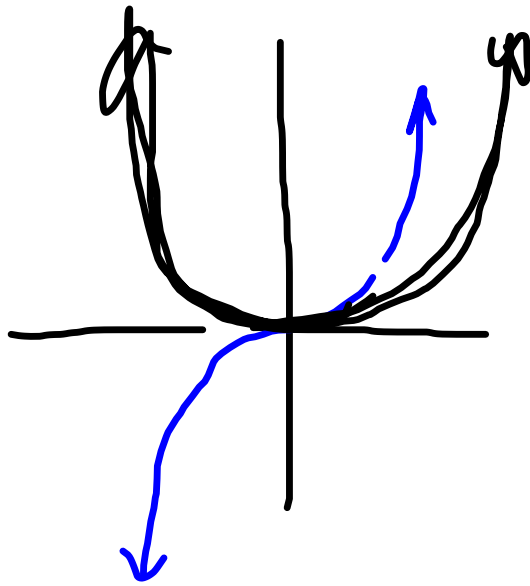
backwards give f' you sketch



f'

f
sketch f

$$f = |x|$$



f'

sketch f